

Lebanon star – of-
Behtleem (EN)

Ornithogale du Liban (FR)

صاصل لبنان (AR)



Ornithogalum libanoticum Boiss & Bl.

Growth conditions in the wild



Endemic to Lebanon.



It is found in mountains, on rocky substrata.



It is located in a wide altitudinal range, from ca. 1300 to 1850 m.a.s.l.

Seed germination

-Water immersion for 24 hours.



-Germination at 14 °C on agar medium at a cycle of 12h light/ 12h dark.

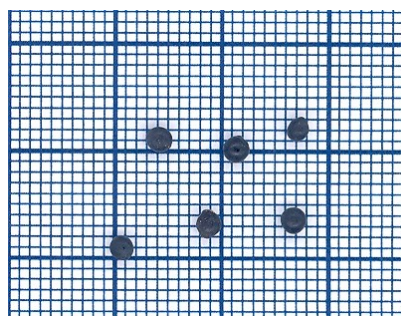


-First seedling may be observed in the first 15 - 20 days.



- Average germination is 40 %

Seed information and collection



-Average weight for 27 seeds is 0.147 g (100 g \approx 18 367 seeds).

-Seeds are present in dried out capsules

-Non protected species, except inside protected areas where collection is regulated

Seed management

-Seeds are directly extracted from initial capsules

-Seeds are orthodox, so can be dehydrated at 15 °C and 15 % RH and stored at 5 °C for several years, or - 25 °C as base collection

J	F	M	A	M	J	J	A	S	O	N	D	J	F	M	A	M	J	J	A	S	O	N	D
			✿	✿	🌱	🌱																	

Lebanon star – of-
Behleem (EN)

Ornithogale du Liban (FR)

صاصل لبنان (AR)

Germination cinetic

